

# Configure FTP over SSL for LA New Hire

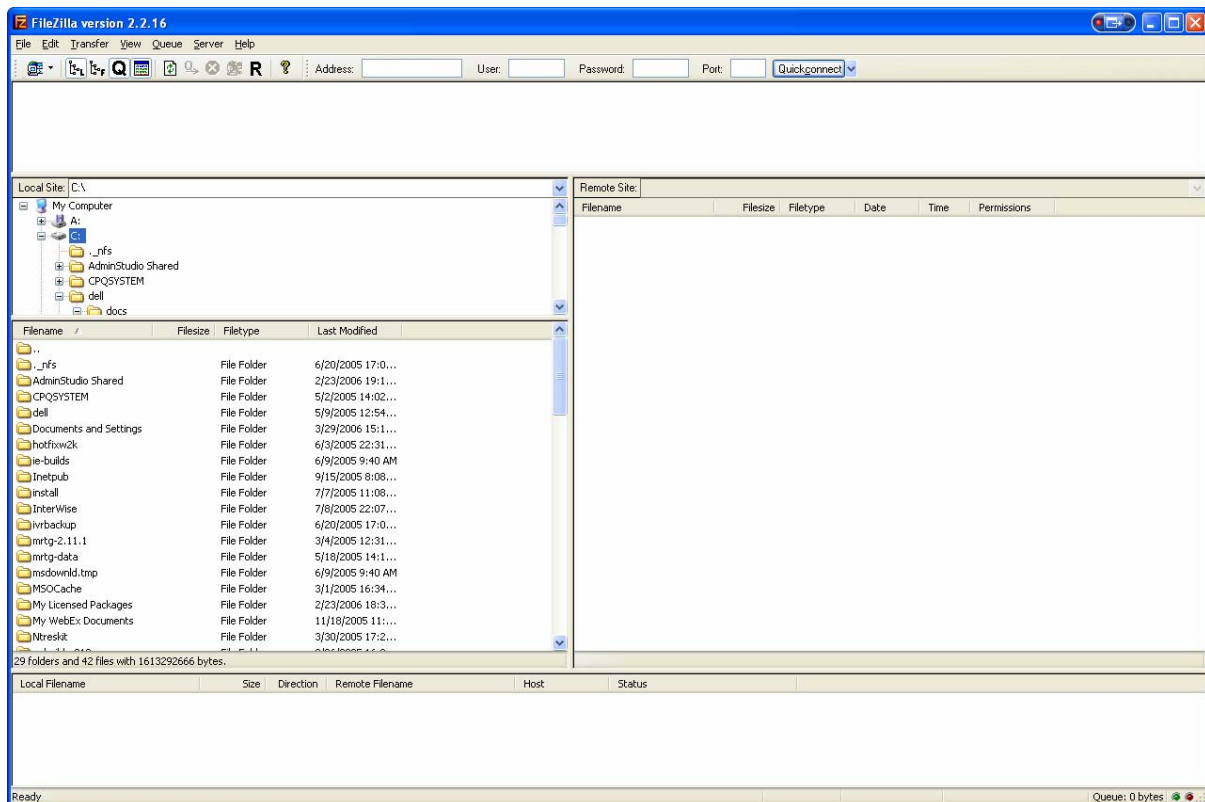
## Notes:

- Please make sure that you have downloaded and installed the freeware version of FileZilla (Provided by PSI)
- Please request a username and password before configuring FTP from the Louisiana Directory of New Hires at:

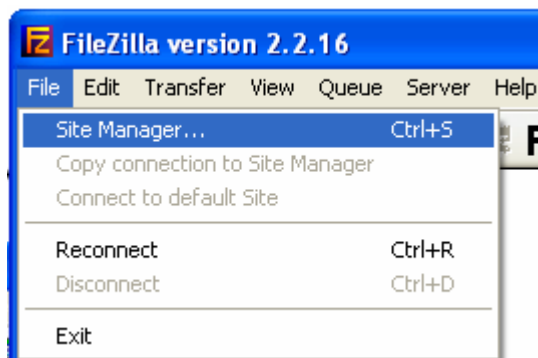
LA-NewHire@Policy-Studies.com



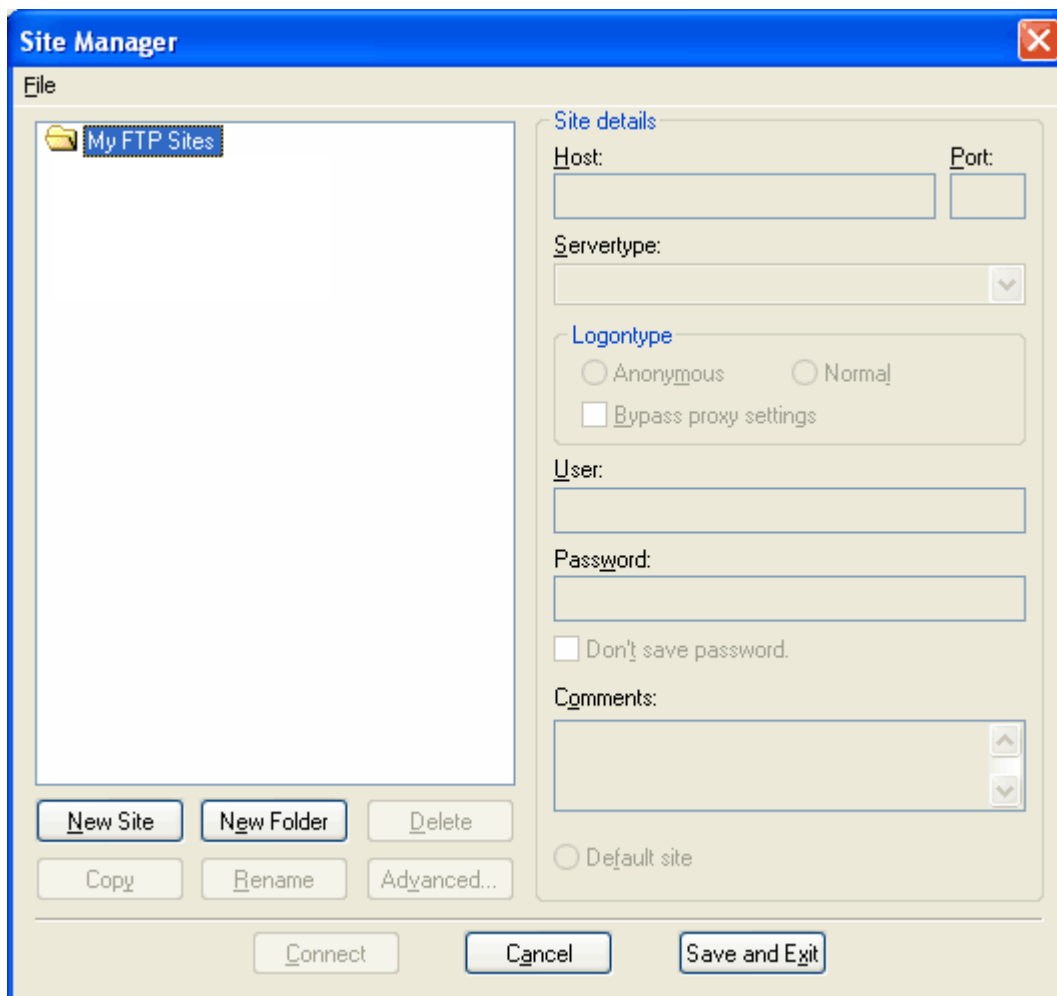
Double click on FileZilla icon located on Desktop



Click File > Site Manager



Click New Site button (Overwrite Default site name “New FTP Site” with LA SSL New Hire



In the section for Site Details, enter the following:

**Host:** 65.197.23.201      **Port:** 21

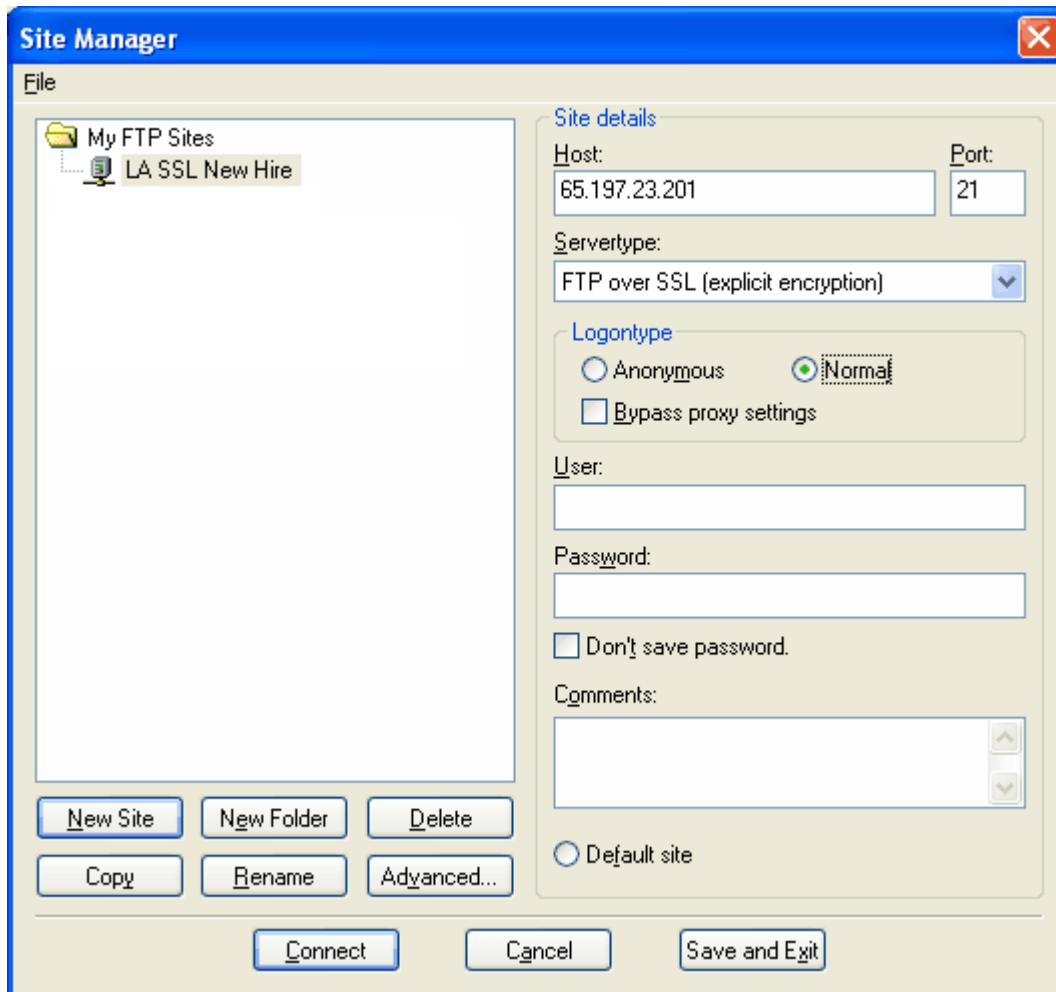
**Servertype:** FTP over SSL (explicit encryption)

**Logontype:** Normal

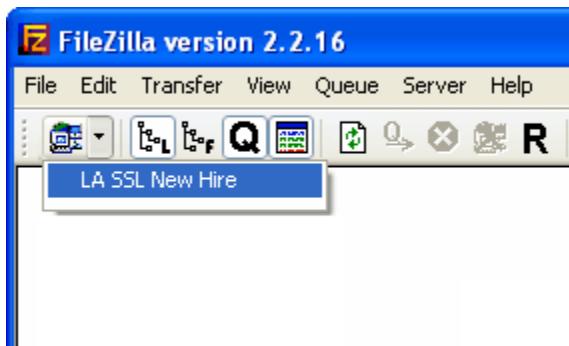
- A username and password will be provided to you by contacting the Louisiana Directory of New Hires via email at:

LA-NewHire@Policy-Studies.com

Click Save and Exit (Must have username and password entered before saving site configuration)

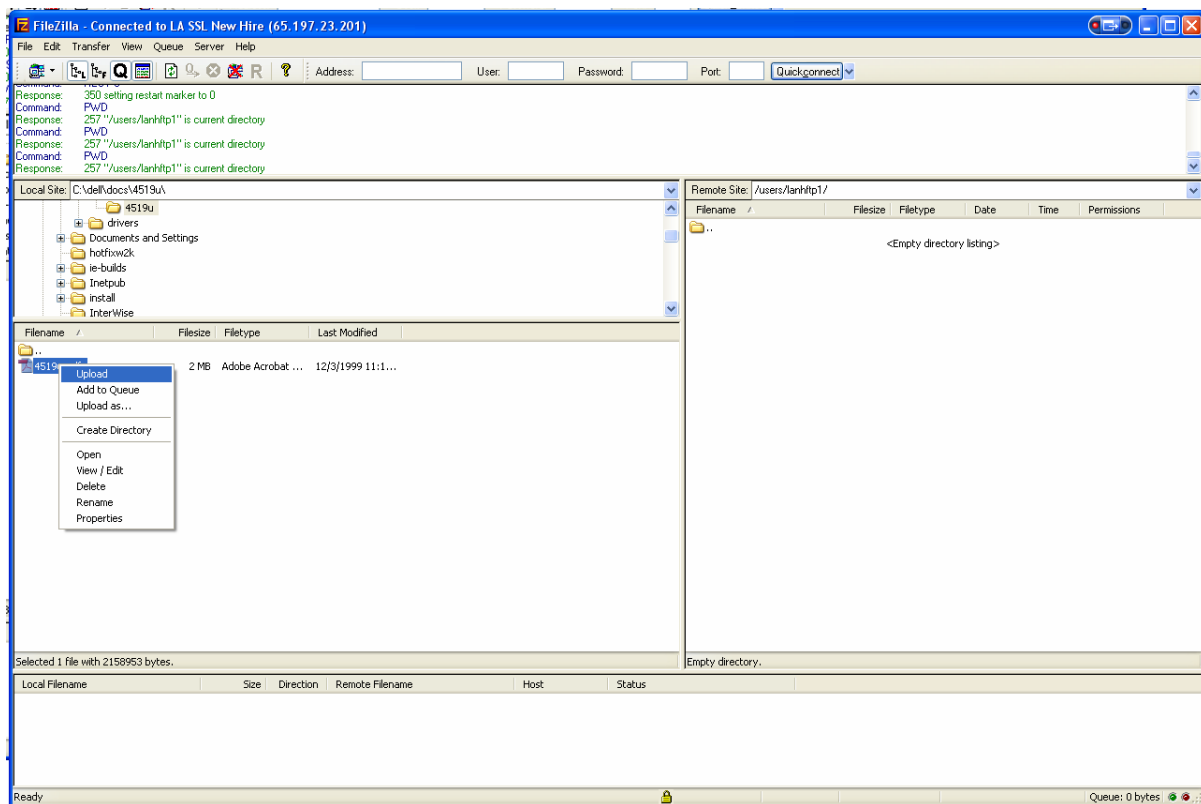


Click on down arrow. Click LA SSL New Hire



Note: If SSL Certificate Window appears select “Accept Certificate Permanently”

Right click on file to be submitted then click upload.



Upload is complete!